
Cub Scout Parent Handbook



Pack 167

Seneca District

Finger Lakes Council

<http://www.bsapack167.org/>

2008-2009

Charter Organization:
Drumlin Lodge #1180 of the Free and Accepted Masons
Palmyra, New York

TABLE OF CONTENTS

Welcome to Scouting	1	Registration	11
Cub Scouting’s 12 Core Values	1	Scout Handbook	11
Character Development	2	Scout Uniforms	11
About Pack 167	2	Class ‘A’ Uniforms	11
Pack History	2	Class ‘B’ Uniforms	12
Pack 167 Structure	3	Adult Uniforms	12
Pack Council	4	Uniform Inspection	12
Pack Committee	4	Uniform and Patch Placement	12
Pack Volunteers	4	Why Do We Wear Uniforms?	12
Pack Leadership	5	Badge and Insignia Placement	13
Den Meetings	6	Council Emblem	13
Pack Meetings	6	Pack Numeral	13
Pack Sponsored Events	6	Den Numeral	13
Fundraisers	6	World Crest	14
Christmas Caroling	7	Badges of Rank	14
Roller Skating Party	7	Badges of Office	14
Blue and Gold Banquet	7	Denner Shoulder Cord	14
Sledding Party	7	Assistant Denner Shoulder Cord ..	14
Pinewood Derby	7	Denner Shoulder Tab	15
Campouts	8	Neckerchief	15
Conservation Day Error! Bookmark		How To Wear the Neckerchief	15
not defined.		Neckerchief Slide	15
Pack Picnic	8	Use of Uniform	15
Council Sponsored Events	8	Ranks, Badges and Awards	16
Cub Scout Fun Day / Webeloree	8	Scout Rank	16
Scouting for Food	8	Tiger Cub	16
Bristol Ski Night	8	Wolf Cub	16
Polar Panic	8	Bear Cub	16
Scout Camping	8	Webelos	16
Cub Scouting and Your Family	9	Scout Badges	17
Family Responsibilities	9	Tiger Badge	17
Advancement Responsibilities	9	Bobcat Badge	17
Pack’s Responsibilities to Families ..	10	Wolf Badge	17
Training	10	Bear Badge	17
Baloo Leader	10	Webelos Badge	17
Scout Requirements	11	Arrow of Light Award	18
		Awards And Recognition	18
		Academics and Sports Program ...	18
		Arrow Points	18
		Compass Points Emblem	18

Immediate Recognition Totem.....	18
Leave No Trace Award.....	19
Miscellaneous Activity Medals.....	19
Outdoor Activity Award.....	19
Recruiter Strip.....	19
Religious Emblems.....	19
Scouting the Web.....	19
Temporary Insignia.....	20
Webelos Colors.....	20
Webelos Activity Badges.....	20
Whittling Chip Card.....	20
World Conservation Award.....	20
Forms.....	21
Adult Information.....	21
Funds Request Form.....	21
Family Talent Survey.....	21
Website Policy and Photo Release..	21
Pack Calendar.....	21

WELCOME TO SCOUTING

Welcome to Cub Scouting. Since your son has decided to join us, you should know that he is one of more the 2 million Cub Scouts in the United States today. Cub Scouting is just one of the phases of the Boy Scouts of America. We have more than 4 million members, all participating in one phase of the Scouting program or another, depending on their age group.

Our scouting program is successful because of our parent volunteers. We urge you to become involved in Cub Scouting as well, either as an adult leader or as a parent interested in the activities of their Cub Scout. In either case, there are many rewards ahead as you watch your son grow and mature.

Scouting is for families. We know that the family is an important influence on the youth of our nation. We also know that there are many different types of family structures in today's world. Scouting has always been a support to families as well as to organizations to which families belong. We believe in involving families in the training of youth and we are sensitive to the needs of present-day families. Cub Scouting provides opportunities for families to work and play together, to have fun together, and to get to know each other a little better.

CUB SCOUTING'S 12 CORE VALUES

1. **Citizenship:** Contributing service and showing responsibility to local, state, and national communities.
2. **Compassion:** Being kind and considerate, and showing concern for the well-being of others.
3. **Cooperation:** Being helpful and working together with others toward a common goal.
4. **Courage:** Being brave and doing what is right regardless of our fears, the difficulties, or the consequences.
5. **Faith:** Having inner strength and confidence based on our trust in God.
6. **Health and Fitness:** Being personally committed to keeping our minds and bodies clean and fit.
7. **Honesty:** Telling the truth and being worthy of trust.
8. **Perseverance:** Sticking with something and not giving up, even if it is difficult.
9. **Positive Attitude:** Being cheerful and setting our minds to look for and find the best in all situations.
10. **Resourcefulness:** Using human and other resources to their fullest.
11. **Respect:** Showing regard for the worth of something or someone.
12. **Responsibility:** Fulfilling our duty to God, country, other people, and ourselves.

CHARACTER DEVELOPMENT

Since its origin, the Scouting program has been an educational experience concerned with values. In 1910, the first activities for Scouts were designed to build character, physical fitness, practical skills, and service. These elements were part of the original Cub Scout program and continue to be part of Cub Scouting today.

Character development should extend into every aspect of a boy's life. Character development should also extend into every aspect of Cub Scouting. Cub Scout leaders strive to use Cub Scouting's **12 core values** throughout all elements of the program—service projects, ceremonies, games, skits, songs, crafts, and all the other activities enjoyed at den and pack meetings.

ABOUT PACK 167

Pack 167 has been in existence for 18 years, serving the youth of the Gananda School District with a wholesome environment that enables scouts to develop those traits that will help them become upstanding citizens.

Pack 167 is a part of the Iroquois District in the Finger Lakes Council. This District covers all of Wayne County and parts of surrounding counties, while the Council covers Wayne, Ontario, Seneca, and Yates Counties. We are chartered through the Drumlin Lodge #1180 of the Free and Accepted Masons.

The Pack maintains a web site at <http://www.bsapack167.org/>. The website contains important information, our schedule, forms you might need and a way to contact the leaders.

If you have any questions or issues, please feel free to contact your Den Leader, the Pack Committee Chairman, Patricia LaMarche (986-3887), or the Cubmaster, Bill Buchko (986-9486).

PACK HISTORY

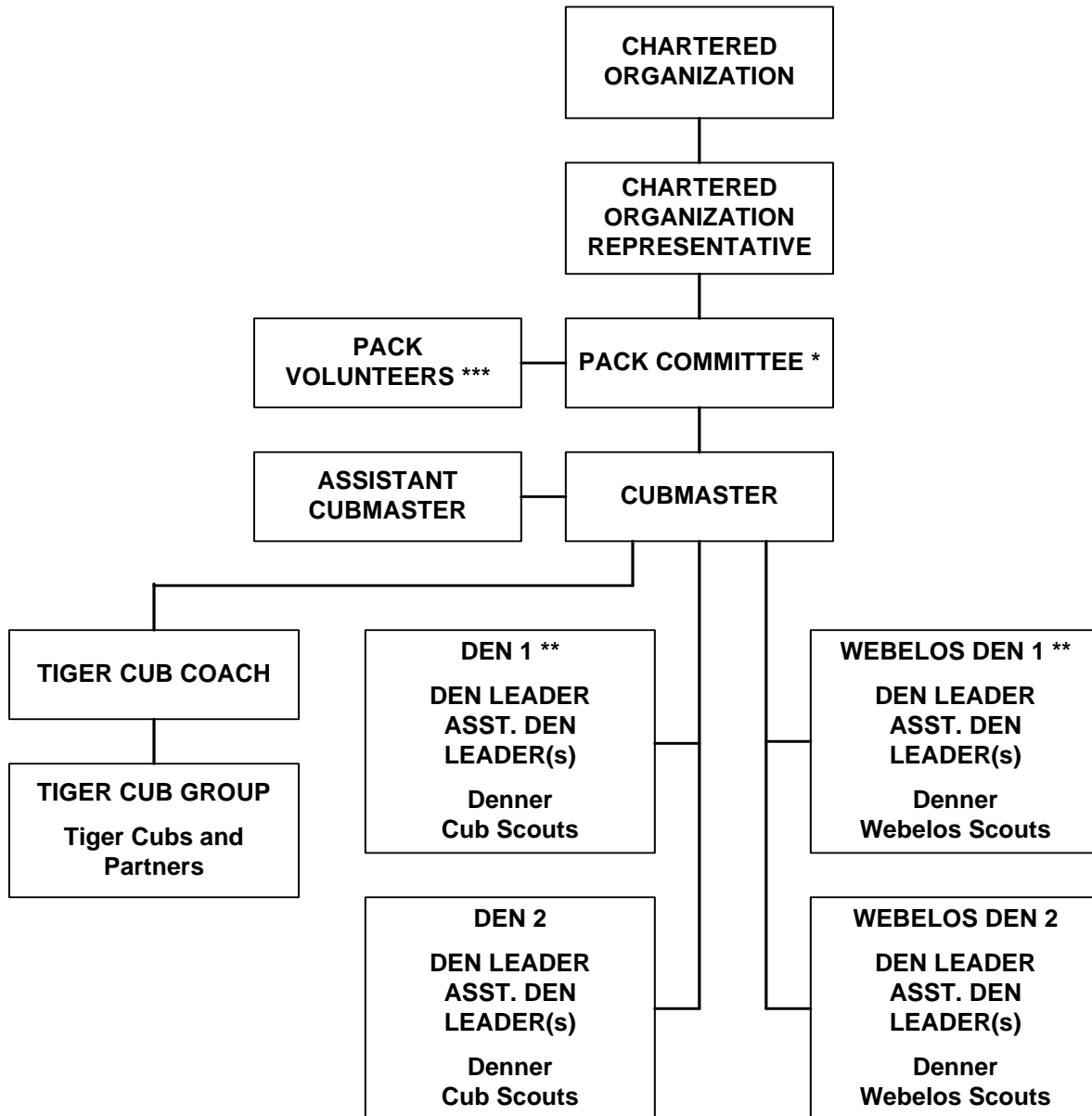
In the summer of 1989, Pack 166 (Macedon) had grown quite large, and split into two packs. A new pack, Pack 167, was chartered, serving the Gananda School District. It started with 65 scouts, and in some years grew to over 100 scouts. Currently, Pack 167 contains about 90 scouts.

Some Interesting "Pack Facts:"

- Our first Tiger program started in 1991.
- Tom Kastner's den built the Pack's original Pinewood Derby track for the 1992 Derby. It was unique in that it had bumps (hills) in the third section. It was both loved and hated, and was finally replaced by our current track in 2002.
- Past Pack Cubmasters: Robert Muckley (89-91); Jeff Johncox (91-92); Frank Halstead (92-95); Avery Kelsey (95-97); Charlie Escriva (97-01); Elisa Friedl (01-03); Mike Sprague (03-04); Dan Bogel (04-06) and Kip McDowell (06-08).

PACK 167 STRUCTURE

A pack cannot survive without people who are willing to give of their time and effort to ensure that the pack runs smoothly. These people become the leaders of our dens and work with or on the various committees to ensure that the scouts have trained people to guide them.



* The following functions are assigned to members of the pack committee: chair, secretary, treasurer, advancement, training, public relations, outings, and membership and registration

** The number of dens is determined by the number and grade levels of the boys in the pack. All leaders must be 21 years of age or older, except assistant den leaders who may be 18.

*** The following functions are Volunteer positions, and somewhat unique to our Pack: BALOO Trained Parent(s), Blue & Gold Banquette Committee, Pinewood Derby Coordinator, Quartermaster, Refreshments Committee and Scouting for Food Coordinator.

PACK COUNCIL

Several leadership positions are necessary for a Cub Scout pack to function properly and successfully, and a number of volunteer positions are necessary to keep the Pack operating smoothly. Descriptions will be given upon request.

If you are interested in *any* of the positions listed (Committee, Leadership or Volunteer), please contact the Pack Committee Chair.

PACK COMMITTEE

Every Pack is under the supervision of a Pack Committee. This committee consists of a minimum of three members. Obviously, with a committee of three, members must assume responsibility for more areas of service than with a committee of seven or more, where the responsibilities can be divided among the members.

Although packs can and do operate with a minimum of three committee members, experience has shown that a larger committee generally ensures a stronger, more stable pack and is better able to perform all the required functions to ensure a successful pack program. It is also a way of involving more pack families in meaningful service to the pack.

Following are the Members of the Pack 167 Committee

Position	Name	Phone
Committee Chair	Pat LaMarche	986-3887
Fundraising/ Popcorn Kernel	Fred Skrotzki	986-1791
Membership & Registration	Pat LaMarche	986-3887
	Bill Buchko	986-9486
Camp Coordinator	Pat LaMarche	986-3887
Public Relations	Kevin Courteau	986-9329
Secretary	Open position	
Treasurer	Jan Ramsey	585-794-1754
Charter Organization Rep	David Reussow	986-4809

PACK VOLUNTEERS

Pack 167 also has a number of Volunteer Positions (some with no training required), which help the Pack run smoothly.

Position	Name	Phone
BALOO Trained Parent(s)- ensure Pack overnight campouts are run correctly	Bill Buchko	986-9486
	Fred Skrotzki	986-1791
	Bill Donaldson	
Blue & Gold Banquet Chair	Carrie Hartman	986-7459
	Darlene Jacobs	986-3987
	Karrie Bowers	986-7338
Pinewood Derby Coordinator	<u>Open</u>	

Pack 167 Cub Scout Parent Handbook

Quartermaster (storage unit, T-shirts, and assist in keeping pack stuff together)	Christine LeTempio Rebecca Bisio	986-3997 986-4186
Awards Chair- ensure boys get awards correctly	Laurie Buchko	986-9486

PACK LEADERSHIP

Leadership members plan and run the Pack Program. This includes Pack Meetings and Den meetings, as well as helping organize the other Pack Activities. There is a lot of overlap with the Pack Committee. Some Leaders serve on the Committee as well.

Following are the Members of the Pack 167 Leadership.

Position	Name	Phone
Cubmaster	Bill Buchko	986-9486
Assistant Cubmaster	Kevin Courteau	986-9329
Tiger Coach	Dan Bogel Michael Braunschweig (assistant)	597-0090 986-4049
Wolf Den 1	Dan Miller Matt Ross (Assistant)	986-3182 986-3803
Wolf Den 3	Randy LaBarge David Kavanaugh (Assistant)	986-9419 986-2926
Bear Den 4	Darlene Jacobs (Co-leader) Karrie Bowers (Co-leader) John Weise Carrie Hartmann	986-3987 986-7338 986-3105 986-7459
Webelo 1st Year Bulldogs	Bill Buchko Scott Chamberlain (Assistant)	986-9486 986-8741
Webelo 1st Year Silverbacks	Pat LaMarche Carol Hollenbeck (Co-leader)	986-3887 986-1791
Webelo 2nd Year Scorpions	Steve Rossi Kevin Courteau (Assistant)	986-2762 986-9329
Webelo 2nd Year Dragons	Kip McDowell	585-734-3740
Bear Den 11 (Asst)	Annette McDowell (Assistant)	585-734-9194

DEN MEETINGS

Den meetings are typically held once a week unless there is a Pack meeting. The Den Leader may hold the meetings in their home, a church, a fire hall, or in a school classroom. Each den will have a den number assigned by the Pack. One of the first activities is to make or update a Den Flag, which will be displayed at Pack meetings.

Your Den Leader will contact you with information on when and where Den meetings will be held.

PACK MEETINGS

Pack meetings are usually held on the last Monday of the month. All Dens and Tiger Cubs are to attend with their families. The meetings are held in the Gananda Middle School Auditorium from 6:45 p.m. to 8:00 p.m. Several times during the year we try to move the event to other locations.

All Cub Scouts wear their Class A uniforms (shirt, neckerchief and slide). Only official Scout hats may be worn with the Class A uniform, all other hats should be left at home. We also encourage the Scouts to wear their Class A uniform shirt to school on the day of Pack meetings.

All people attending the meeting should remain in the auditorium. No unescorted children are permitted in the halls. This includes the time before and after the meeting. An adult must accompany children going to the restroom.

Please be respectful of those who are presenting at the meeting. The Cub Scout sign (index and forefinger raised above the head in the shape of a V symbolizing the wolf's ears) will be used to bring the meeting to order and to restore order. When the sign is up **everyone** is asked to be quiet.

You can go on our website to see what the annual program plan is for pack meetings and what the overall pack schedule is. <http://www.bsapack167.org/>

PACK SPONSORED EVENTS

There are many opportunities for our pack to engage in activities outside of the pack meetings. In previous years we have gone to basketball games, had picnics and hayrides. We also go to various summer camps. Other Cub Scout activities include Christmas Caroling, Pinewood Derby and Scouting for Food. We encourage parents who have ideas or opportunities for pack activities to let us know.

FUNDRAISERS

For some time now, the Pack has had one fundraiser a year. This is the Popcorn Sale in October/November. This Fundraiser has been so successful to date, that we have not had a needed any others.

Seventy percent of the money raised from this sale goes back into scouting. In addition, each Scout receives 20% of his total sales, which is placed in his individual Campership Account. The money in this account may be used towards registration, pack activities, summer camp, or any other scouting expense. Pending our sales amount the pack receives funds to keep our program going for items like the Blue and Gold Banquet, The Pack family camp out, and for the den programs.

CHRISTMAS CAROLING

In December, we visit a nursing home and sing Christmas carols for the residents. We often decorate their Christmas tree with ornaments each den has made.

ICE SKATING PARTY

An Ice Skating party is usually held the Sunday evening before Martin Luther King Day. All scouts and their families are welcome.

BLUE AND GOLD BANQUET

The Blue and Gold Banquet is *usually* held on the second Saturday night of February. This dinner is to celebrate the birthday of scouting. In past years it has been held at the Pal-Mac High School Cafeteria.

It is the highlight event of the year! It brings our Pack families together for a meal and an evening of fun and inspiration. It is also a special time when we honor the Webelos who have achieved the Arrow of Light Award. This is the highest award you can receive in Cub Scouts.

The families of each Den may be asked to bring a dish to pass. Each family is also asked to bring their own place setting. The Pack provides the main dish, and milk and coffee for everyone.

SLEDDING PARTY

A Sledding party, behind the Town Hall, is usually held Sunday afternoon, following the Blue and Gold Banquet. All scouts and their families are welcome.

PINEWOOD DERBY

The Pinewood Derby for our pack is *usually* held the in March at McLouth Chevrolet in Macedon. The scouts each receive a Pinewood Derby car kit at the December Pack Meeting. Included are the regulations and rules for the derby. The Scouts work on their cars with their Den and parents.

There is a pack Pinewood Derby committee, which you may wish to join, led by the Coordinator, which organizes our race.

On the day of the race each group of scouts has an assigned time to register and race (Webelos, Bears, Wolves and Tigers). At the end of the all sessions, there is a final round between the top 3 winners of each group. The top 3 winners of this final round will represent our pack at the district race.

Note that there is usually a "Parents and Siblings" race the night before the Pinewood Derby is run. This is a fun time for parents, boy scouts and brothers and

sisters that would like to build and race a car “unofficially.” The committee uses this event to make sure that everything is set up properly for the race on the next day. *Cars run in this event cannot be used in the Pinewood Derby the next day.*

CAMPOUTS

We usually try to have at least one Pack campout the first weekend in June at Bullis Park. This is a family event where we celebrate the year the boys and their families have had in scouting. This year we hope to make this a two day event and be our big closing for the year with a Tiger graduation ceremony and a moving up ceremony for all of the other boys.

PACK SUMMER ACTIVITIES

In either June or July, our pack will try to have events for the boys to look forward to. If you would like to help with an event such as a picnic or outing please let the pack committee know. Boys that are going to camp will get together to prepare for camp. See your den leader for those activities.

COUNCIL SPONSORED EVENTS

CUB SCOUT FUN DAY / WEBELOREE

This event (sometime split between the two) is *typically* held in October and includes crafts, games, projects and Fun! For the Cub Scouts, there is typically an activity or two that can be used in earning Beltloops or electives toward Arrow Points. The various Packs in our Council take turns putting this on. The Webelos may camp overnight with a parent or guardian.

SCOUTING FOR FOOD

Each year our pack helps with the Scouting for Food Campaign. Scouts take bags and ask the residents to donate canned goods. The canned goods from our pack are then collected and taken to local food pantries.

BRISTOL SKI NIGHT

Each year, there is at least one Scout night at Bristol Mountain. For a low fee, scouts and their families can spend an evening skiing with other scouts. The fee includes lessons, if you like, in either skiing or snowboarding.

POLAR PANIC

This even is typically held in January, in conjunction with the Boy Scouts Klondike Derby. It includes games and cold weather skills and lots of hot chocolate. There is typically an activity or two that can be used in earning Beltloops or electives toward Arrow points.

SCOUT CAMPING

Summer time is prime time for Scout camping, and the Council sponsors many different camps to meet the needs of the boys, and their family schedules. Our pack

normally has one of the strongest representations at Cub Resident camp which is held at Camp Dittmer in Phelps in August. This is a three day camp where boys get to boat , swim, fish, participate in archery events, and learn all about camping. Ask an older scout about all the great times at "Dittmer". Parents are encouraged to attend this event. Boys that have completed their Bear year are also eligible to go to a week long camp at Camp Babcock-Hovey on Seneca Lake. Ask your den leader about this program.

There are also Day Camps, where the scouts go each day for a week, coming home each night; an Adventure Weekend Camp, where Scouts will camp for one night.. In all cases, parents are welcome to join in and to help out as well.

CUB SCOUTING AND YOUR FAMILY

Cub Scouting gives families an opportunity to spend quality time together. It is the Leader's role to provide interest, skills, and time in developing a good program. The family provides help and support for the den and pack. Families can help in many different ways, which may vary from family to family, depending upon family structure and other family responsibilities. Some examples of family involvement include:

FAMILY RESPONSIBILITIES

- Working with your Cub Scout on achievements and electives
- Attending the Pack meetings with your Cub Scout
- Presenting advancement awards to your scout at the pack meetings
- Helping with Pack fundraisers, which also helps your scout earn money to help with scouting expenses
- Helping at an occasional Den meeting on a specific project.
- Providing refreshments
- Assisting at Pack Activities like the Blue and Gold Banquet, Pinewood Derby, etc.
- Assisting with or even planning Den outings
- Help teach a Webelos Activity Badge
- Become a Den Leader or Assistant Den Leader
- Become a member of the Pack Council (Cubmaster, Treasurer, etc.).

Cub Scouting is a family experience, designed to help you and your son grow, while learning. As a family experience, you may get as much out of scouting as your son.

ADVANCEMENT RESPONSIBILITIES

The advancement program is part of the fun of Cub Scouting. It is an excellent opportunity for families to get to know their own son better and there is much satisfaction to be gained both on the part of the families and the boy.

So that families will understand the correct interpretation of the advancement program, you should read the parents guide in the boys' handbook. The Den leader should discuss achievements and electives or activity badge areas with the families so they fully understand the importance of following the requirements as closely as possible; The Scout won't be able to accomplish some of the achievements without his family's help. The Den leader can also help families keep a happy balance between expecting too much and expecting too little in achievements and electives. If families are too critical, the boy is likely to lose confidence in himself and lose interest in Cub Scouting. On the other hand some families are inclined to be too easy on their boys. Boys are great testers and if families let them get by with less than their best, they may be influencing character in the wrong direction.

PACK'S RESPONSIBILITIES TO FAMILIES

Just as parents have obligations to the Pack, the Pack has the following responsibilities to the parents.

- To provide a well-planned, year-round program of activities in the den and pack which meets the purposes of Cub Scouting and the needs of the boys.
- To provide trained, qualified, and enthusiastic leadership for all den and pack meetings and activities.
- To provide training for parents and keep them informed.
- To provide activities which help strengthen the family and give them opportunities to work and play together.
- To help families participate in Cub Scouting according to each family's unique ability to do so.

TRAINING

All Leaders in the Pack receive training. While training is not required of Pack volunteers, it is still available.

BALOO LEADER

One important position that of the Baloo Trained Parent (Basic Adult Leader Outdoor Orientation). At least one leader (a parent who is not already part of a pack leadership team) from each pack must be BALOO trained in order to carry out a camping activity. More than one is better. If you are interested in receiving this training, see any of the Pack Leadership.

SCOUT REQUIREMENTS

All scouts and designated leaders are required to be registered, wear a uniform, and have their own copy of the appropriate scouting handbook.

All scouting items may be purchased at the Otetiana Scout Store (474 East Ave., Rochester 585-241-8551), or in Newark at Arcadia Sports (210 N. Main St., 315-331-1309), or on-line at <http://www.scoutstuff.org/>.

REGISTRATION

Each Cub Scout, Den Leader and Committee member must be a registered scout. This consists of filling out a registration form and submitting it to council. There is no charge for adult registration, as the Pack will pick up the cost.

Registration fee is \$50.00 for Cub Scouts and Webelos. This fee covers various expenses such as registration to The Boys Scouts of America (\$10.00), Pack T-Shirt (if a new scout), and expenses for the Pack (awards, reimbursement for Den project materials, reimbursement for pack activities such as the Blue and Gold Dinner, Pinewood Derby, etc.). Pack 167 does not charge weekly or monthly dues, as all is paid up front.

Each Scout has the opportunity to earn money through fundraisers to offset any additional expenses of scouting and future registration costs. You will learn more about this at den and pack meetings.

SCOUT HANDBOOK

All scouts must purchase the handbook for their rank. Manuals are available at any of the Scout Stores, as well as on-line. Make sure you purchase the new books, as we will no longer be using the old ones.

SCOUT UNIFORMS

The following describes which parts of the uniform are required and which are optional, as well as the difference between Field Dress (formerly known as Class 'A') and Activity Dress (formerly known as Class 'B') uniforms.

FIELD DRESS UNIFORMS

The only required uniform items are: a Scout Shirt (either long or short sleeved), which is blue for Tigers, Wolves and Bears, and blue or khaki for Webelos, a Neckerchief (type depends on the rank of the scout); and a Neckerchief Slide (again, type depends on the rank of the scout). Optional uniform items include: hat (type depends on the rank of the scout), pants and belt.

The required patches are: a Council Patch (Finger Lakes Council), the Pack number (167), the Den number (assigned by Pack) or Patrol Emblem (Webelos), and the World Crest. All other patches are awarded by the pack for completing requirements. See Uniform and Patch Placement (page 12), as well as the Rewards and Recognition (page 18) in this handbook for correct placement of patches.

Purchase of a Cub Scout belt is encouraged. Scouts may earn “Belt Loop” awards that fit on this belt. Most scouts do wear the hat but it is not required. Note that Webelos wearing the khaki shirt should also be wearing the blue shoulder loops.

If you do not purchase the optional uniform pants for your scout, we encourage your scout to have a pair of dark blue “Dockers” type pants, or blue jeans with the Blue shirt, and Olive “Dockers” or jeans with the khaki shirt. We would like to discourage wearing athletic shorts, sweat pants, army pants or the like with the Field Dress Cub Scout uniform.

ACTIVITY DRESS UNIFORMS

The Activity Dress uniform is a Cub Scout T-shirt, which is provided by the Pack, or any T-Shirt received at a Cub Scout event, such as summer camp. Activity Dress uniforms may be worn to Den Meetings, depending on your Den Leader and to events such as the Pack Picnic and the like. *Activity Dress uniforms are not to be worn to Pack Meetings, or public events such as Parades or Community Service.*

The Pack will provide each Scout with one Pack 167 T-Shirt, and provide replacements, if needed, at a significant discount. It is fine if the T-Shirt looks well used. This is its purpose.

ADULT UNIFORMS

Adult uniforms are worn *only* by registered leaders. The requirements for the adult uniform vary and will be given upon request.

UNIFORM INSPECTION

There will be one official, announced uniform inspection at a Pack Meeting, and one *surprise* inspection. Each Den will receive a score.

UNIFORM AND PATCH PLACEMENT

Wearing the uniform signifies membership in the BAS and commitment to its aims. There is a correct placement on the uniform for each badge and insignia.

WHY DO WE WEAR UNIFORMS?

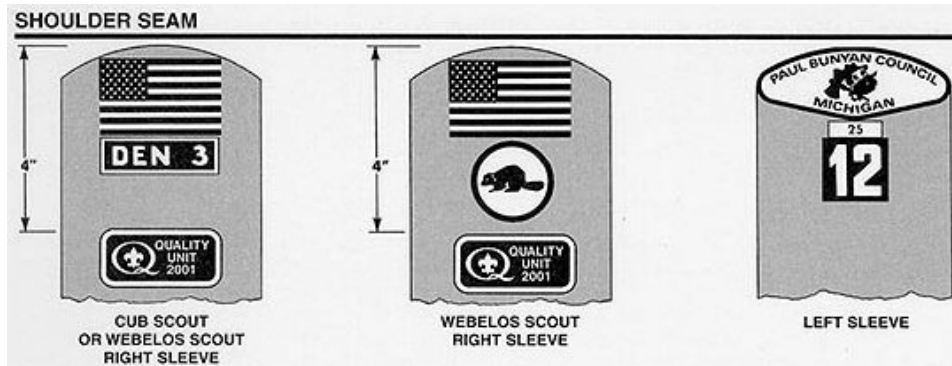
The Boy Scouts of America has always been a uniformed body. There are many reasons for this. One reason stands out above all the rest. We wear the uniform because it is a means of identifying ourselves openly with the principles to which we are committed-character development, citizenship training, and physical and mental fitness.

The fact that youth and adult members of Scouting wear a uniform doesn't mean that we're all alike. We come from different ethnic and racial backgrounds. We have our own religious beliefs and political views. We are each individuals with our own family traditions and loyalties. So the uniform is not intended to hide our individuality. But it is a way we give each other strength and support. It is a bond that ties us together in spite of our differences. It is a way of making visible our commitment to a belief in God, loyalty to country, and to helping other people.

The Scouting movement is built on positive values. As we wear the uniform, we are openly identifying ourselves with those values where everyone can see us. We stand together, not alone, in encouraging others to live by those same principles. Boys and adults alike should take pride in belonging to such a movement and wear the uniform as it is intended.

BADGE AND INSIGNIA PLACEMENT

While most of the Scouting manuals show placement of Badges and Insignia, you might find the following information useful as well.



COUNCIL EMBLEM

A multicolor council emblem is worn by all youth and adult members directly below the shoulder seam on the left sleeve.

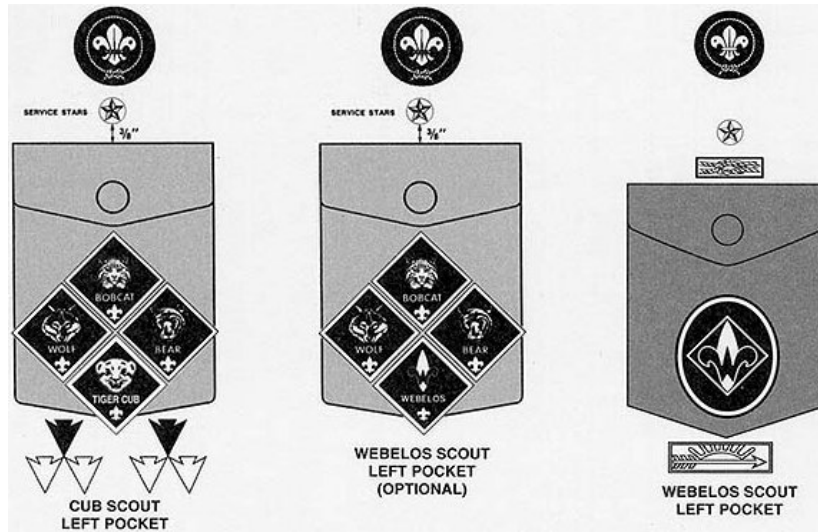
PACK NUMERAL

A white numeral embroidered on a red background is worn by Cub Scouts, Webelos Scouts, and all pack leaders directly below the council patch

DEN NUMERAL

A gold numeral embroidered on a navy blue background is worn by all Cub Scouts and their Den leaders. It is centered immediately below and touching the U.S. flag on the right uniform sleeve.

Webelos dens may have a name and wear the appropriate "patrol" emblem instead of a den numeral, but they must still be referred to as dens and not patrols.



WORLD CREST

The World Crest is worn by all members of Scouting to symbolize their membership in the World Scouting movement. It is centered horizontally over the left pocket and vertically between the left shoulder seam and top of the pocket.

BADGES OF RANK

The left pocket of the official uniform for Cub Scouts shows placement of the Tiger Cub, Bobcat, Wolf, and Bear badges and Arrow Points. A diamond-shaped Webelos badge may be worn in place of the Tiger Cub badge by Webelos Scouts who did not earn the Tiger Cub badge.

When a Webelos Scout chooses to wear the oval-shaped Webelos badge (typically on the khaki shirt), other badges of rank and Arrow Points are not included. The Arrow of Light Award goes below the pocket.

BADGES OF OFFICE

Cub Scouts can briefly hold one position of Office, typically for a month. That is the Position of Denner or Assistant Denner.

DENNER SHOULDER CORD

A gold double-strand shoulder cord, worn suspended from the left shoulder. It is worn only during the term of office. The tab may be worn without the cord to indicate previous service as a denner.



Denner shoulder cord



Assistant denner shoulder cord

ASSISTANT DENNER SHOULDER CORD

A gold single-strand shoulder cord, worn suspended from the left shoulder. It is worn only during the term of office. *(Note: small Dens may not have an assistant denner.)*

Webelos denners and assistants with the khaki shirt wear the cord, without the tab, under the left epaulet.

DENNER SHOULDER TAB

A gold felt tab that former denners may wear on the left shoulder.

NECKERCHIEF

The Official BSA neckerchiefs are the only neckerchiefs that boys should wear. Packs (or Dens) should not make their own pack neckerchiefs for boys to wear.

HOW TO WEAR THE NECKERCHIEF

1. Fold the long edge over several small flat folds to about 6 inches from the tip of the neckerchief. A tight fold prevents gathering around the neck and is more efficient than rolling or twirling.
2. Place the neckerchief around the neck, under the shirt collar. (*Note: the neckerchief may officially be worn under or over the collar, so long as everyone in the pack does the same. Pack 167 has chosen to wear the neckerchief under the collar.*)
3. Draw the neckerchief slide over the ends and adjust to fit snugly. Let the neckerchief ends hang loose.
4. The portion of the neckerchief showing below the back of the neck should measure no more than 6 inches.



NECKERCHIEF SLIDE

Use the official gold-colored metal slide with Cub Scout emblem. Boys may also wear handmade neckerchief slides.

USE OF UNIFORM

The official uniforms are intended primarily for use in connection with Scouting activities. They should be worn to all den and pack events, and may be worn to school, church, or any family function. The uniform may also be worn while participating in a pack money-earning project if approved by the local council. It may be worn when selling tickets to such events as Scouting shows that are approved by the council.

The uniform may not be worn by either Cub Scouts or adult leaders when:

- Involved in any distinctly political endeavor.
- Appearing on the stage professionally without special approval from the National Executive Board.
- Taking part in parades, except when rendering service as a Cub Scout or leader or when officially representing the Boy Scouts of America.
- Participating in demonstrations not authorized by the Boy Scouts of America.

RANKS, BADGES AND AWARDS

A Cub Scout's Rank, and badges being earned are used interchangeably, and can be confusing, even for someone who has been in scouting for a while.

SCOUT RANK

A Cub Scouts Rank is based on his grade in school and age, no matter when he joined Cub Scouts. Crossover to the next rank happens at the end of a School year, with the exception of the older Webelos, who will cross over into Boy Scouts late in the school year. Following are the ranks.

TIGER CUB

Tiger cubs in first grade or are age 7, each with his adult partner. These scouts are working toward their Tiger Badge. The Tigers and their partners (typically a parent) meet as a group at least once a month in addition to the Pack Meeting.

Tiger cubs are a great introduction to scouting, for both the scout and his partner. Scouts get a chance to know each other and make new friends.

WOLF CUB

Wolf cubs are second grade or are age 8. These scouts are working toward their Wolf Badge. The Wolves typically meet as Dens at least three times a month in addition to the Pack Meeting.

Wolf dens continue a boys introduction to scouting. The scouts within a Den get to know each, and often become friends though their school years. Den time is used to help with those achievements and electives that would be difficult to do at home.

BEAR CUB

Bear cubs in third grade or are age 9. These scouts are working toward their Bear Badge. The Bears typically meet as Dens at least three times a month in addition to the Pack Meeting.

Bear Dens continue the work started by the Wolf Dens. The scouts have had a year to get to know each other, what to expect and what is expected of them. There may also be new scouts to introduce and get to know.

WEBELOS

Webelos are in fourth (Webelos I) and fifth (Webelos II) grade, or age 10. The Webelos program is about a year and a half long. These scouts work first toward their Webelos badge, and then the Arrow of Light award. Webelos typically meet as Dens at least three times a month in addition to the Pack Meeting.

Webelos Scouting is for the oldest boys in a Cub Scout pack. Get set for fun and adventure! As a Webelos Scout, your son will do more grownup things than the younger boys can do. He will go camping with his den, along with you or an adult relative or friend. At the same time, he will be getting ready to become a Boy Scout. Along-the way, he will earn special badges that only Webelos Scouts can get.

SCOUT BADGES

Cub Scouts spend most of the year working toward earning their next rank badge.

BOBCAT BADGE

The Bobcat badge is the first badge all scouts earn, and must be earned *before* a scout may continue on and earn his Tiger, Wolf, Bear or Webelos badge.

This badge is earned by learning the basics of what Cub Scouting is, and learning the Cub Scout Oath, Promise, Sign; Salute and Handshake.



TIGER BADGE

To earn the Tiger Cub Badge, the Scout must complete a Family Activity, a Den Activity, and a "Go See It" Activity in each of five Achievement Areas: Making My Family Special, Where I Live, Keeping Myself Healthy and Safe, How I Tell It, and Let's Go Outdoors.

There are *no* performance requirements for a boy. Simply participating and doing one's best in an activity constitutes completion.



WOLF BADGE

To earn the Wolf rank a Cub Scout must complete 58 tasks out of a possible 74 tasks that are offered in the book.

Note that these activities are primarily done at home and signed off by the parent after the boy has completed each task. The book is then shown to the Den Leader who records the progress and also signs the boy's book.



BEAR BADGE

To earn the Bear Badge, a Cub Scout must complete 12 achievements out of a possible 24 that are offered in the book. The achievements are grouped in 4 major areas, "God," "Country," "Family," and "Self." Within each group, a required number of achievements must be completed. Any achievements that are *not* used to earn the Bear Badge may be used to earn Arrow Points.

Note that these achievements are primarily done at home and signed off by an adult family member after the boy has completed each one. The book is then shown to the Den Leader who records the progress and also signs the boy's book.



WEBELOS BADGE

All Webelos start by working toward earning their Webelos badge. To get it the scout must earn at least three activity badges. A scout must also show reverence toward God and be faithful in his religious duties.

Note that the Webelos Den Leader will now sign off your activities, not a parent or guardian.



ARROW OF LIGHT AWARD

The ARROW OF LIGHT AWARD is the highest rank in Cub scouting. It's tougher to earn than the Webelos badge. The scout must first earn his Webelos Badge and a total of eight activity badges. The Arrow of Light Award is the only badge earned in Cub Scouting that can be worn on the Boy Scout uniform.



AWARDS AND RECOGNITION

In addition to earning their Rank badges, there are other awards and recognition the scout will earn. Listed here are the most common:

ACADEMICS AND SPORTS PROGRAM

The Cub Scout Academics and Sports Program is a supplemental enrichment program that complements the existing Cub Scout program. The Academics subjects and, Sports activities allow boys to learn new techniques, increase scholarship skills, develop sportsmanship—and have fun. Boys participating in the program will be recognized for enjoying teamwork, developing physical fitness, and discovering and building new talents.

There are two types of awards that can be earned through the Cub Scout Academics and Sports program, Beltloops and Pins. Beltloops are fairly easy to earn, and only require that the scout participate and have a basic familiarity in the subject. Pins require demonstration of more advanced knowledge or skills.

ARROW POINTS

After a Cub Scout earns his Wolf or Bear badge, each 10 electives that a Wolf or Bear Cub completes earns the scout an Arrow point. The first Arrow point earned is a gold arrow point, while all additional arrow points are silver. Only two Gold Arrow points (one Wolf and one Bear) may be earned.



COMPASS POINTS EMBLEM

After the Webelos badge has been earned, a Webelos scout can earn the Compass Points Emblem. It is awarded after seven activity badges are earned, four more in addition to the three earned for the Webelos badge. Wear your compass points emblem attached to the button on the right pocket of the Webelos uniform shirt.



After the compass points emblem has been earned, a Scout will receive a metal compass point for each four additional activity badges earned. A scout may pin these compass points on the emblem in the "E," "W," or "S" positions, in any order desired. The Emblem and all three compass points by completing 19 activity badges, including the three required for the Webelos Badge.

IMMEDIATE RECOGNITION TOTEM

As a scout completes activities toward his next badge, he may wear a totem (also known as Progress through the Ranks Totem) which can be hung from the right shirt pocket. Using beads, a scout can both show and track progress toward his next badge.



LEAVE NO TRACE AWARD

The Leave No Trace Awareness Award is available to all scouts, and is earned by promising to practice the Leave No Trace frontcountry guidelines, as well as additional requirements based on Scout rank.

The Leave No Trace Awareness Award is worn on the uniform shirt, centered on the right pocket as a *temporary* patch.



MISCELLANEOUS ACTIVITY MEDALS

Medals earned by Cub Scouts and Webelos Scouts in derbies or other contests are worn centered above the left shirt pocket. These should be worn only on special occasions such as those mentioned above. Only five medals may be worn at a time, pinned in a single row immediately above the seam of the left pocket.

OUTDOOR ACTIVITY AWARD

All Cub Scouts have the opportunity to earn the Cub Scout Outdoor Activity Award. Requirements vary by Scout Rank. Scouts may earn the award in each of the program years as long as the requirements are completed each year. The first time the award is earned, the scout will receive the pocket flap award, which is to be worn on the right pocket flap of the uniform shirt. Each successive time the award is earned, a wolf track pin may be added to the flap.



RECRUITER STRIP

This is a cloth strip presented to boys for recruiting another boy into the program. Worn by Cub Scouts and Webelos Scouts centered, below, and touching either the right pocket, or centered, below, and touching the Tiger Cub strip if applicable.

RELIGIOUS EMBLEMS

"A Scout is reverent." All Scouts show this by being faithful in their duty to God. Some go further and give special service. This can qualify them for a religious emblem. Such an emblem is not a Scouting award. It is conferred on a Scout by his religious leader. Each faith has its own requirements for earning its emblem. Generally, these awards may be earned by both Cub Scouts and Webelos Scouts, but not by Tiger Cubs.

Most of the awards consist of bar pins, ribbons, and pendants, and are worn on the uniform above the left pocket on formal occasions. In addition, the Religious Emblem Square knot may be worn on the uniform over the left pocket by youth or adults who earned any of the religious awards. One or more miniature devices are affixed to the knot to indicate which level(s) of the award was earned.

SCOUTING THE WEB

To earn this award, go to <http://scoutingtheweb.com/quiz/>, where instructions and a link can be found. Clicking the like will open a new window from which you will find 15 questions related to the Cub Scout program, computers and the internet. Many of the answers can be found at various sites on the Internet. Copy/Print the patch ordering information, and turn it into your Den leader.



TEMPORARY INSIGNIA

Over the course of the year, a scout may earn temporary patches. These may be from participating in events such as the Tiger/Cub Scout Fun Day, Popcorn sales, the Klondike Derby, as well as summer camp.

Only ONE Temporary patch may be worn at a time, centered on the right shirt pocket. Note that Cub or Webelos Scouts may also wear the Immediate Recognition Totem or Webelos Compass Points Emblem suspended from the right pocket button in addition to any temporary patch sewn on the pocket.

WEBELOS COLORS

Webelos colors are an optional Webelos Scout uniform item whose use is determined at the Pack level. It consists of woven green, red, and gold streamers on a blue metal bar with the border and word "Webelos" in gold. It is worn on the right sleeve immediately below and touching the U.S. flag *if no Den number is worn* (i.e., it covers the Den and Quality Unit insignia). If *Den number is worn*, then under and touching the Den number. When colors are worn, activity badges are worn on the streamers.



WEBELOS ACTIVITY BADGES

Any of 20 metal pins awarded to Webelos Scouts for completion of a prescribed set of criteria. Broken into the five 'Groups' of: Physical Skills, Mental Skills, Community, Technology, and Outdoor.

These pins are earned only by Webelos Scouts, and worn on the light blue front panel of the Webelos cap or on the optional Webelos colors.



WHITTLING CHIP CARD

Bear cubs may earn the Whittling Chip Card after learning the proper use of a pocket knife, allowing the privilege of carrying a pocketknife to *designated* Cub Scout functions.

WORLD CONSERVATION AWARD

The World Conservation Award provides an opportunity for individual Cub Scouts to "think globally" and "act locally" to preserve and improve our environment. This program is designed to make youth members aware that all nations are closely related through natural resources and that we are interdependent with our world environment.



Requirements vary depending on Rank, but this is a difficult award to earn, and typically only a few scouts earn this award in any given year. The World Conservation Award is considered a temporary patch, and is worn on the right shirt pocket.

FORMS

There are several forms you should be aware of. If you need a new form, contact your Den Leader or the Assistant Cubmaster. All forms should also be available on our web site, in PDF form.

ADULT INFORMATION

This form contains additional information the Pack would like to collect on each scout's parent or guardian. This information must be on file in order for a parent or guardian to transport scouts out of Council (*i.e.*, over the county line), as well as being covered by the Boy Scouts of America's insurance policy.

FUNDS REQUEST FORM

This is the form used to reimburse you for scouting expenses, with funds to be taken from your Scout's Campership account. Note that your Den Leader should know the current balance for each scout. This form must be filled out, signed by your Den Leader (or any other leader) and a Committee member and given to the Pack Treasurer. The treasurer will then write you a check. This process can be done through your Den Leader. Scouting expenses include money spent on uniforms, handbooks, camping gear (used at a Cub Scout campout), or any of the scouting activities that have a fee (Polar Panic, Cub Scout Fun Day, Bristol Mountain, etc.).

FAMILY TALENT SURVEY

This form is to be filled out by parents and turned in at a Pack meeting or to your Den Leader. It lists your specific talents and to what level you are willing to assist the Pack, and anything you would specifically like to do.

WEBSITE POLICY AND PHOTO RELEASE

Described is Pack 167's Website Use Policy, which includes a Release Form you must sign, indicating whether you will or will not allow pictures of your scout and family to be posted on our website. Please read and understand the Website Use Policy *before* signing the Release Form. You may update the Photo Release Form at any time.

PACK CALENDAR

This calendar may be updated throughout the year. This will give you an idea of when the pack meeting and events will occur. At each pack meeting you will receive an update schedule for the coming month on the Pack Newsletter. We will also notify leaders of any changes at the monthly leader meeting. Information on events, with details, is available on our website as well.